



Electronic Engineering

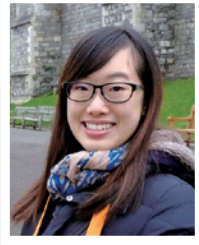
MOK Pak Ning Niki

2013 BEng (EE)
Railway Safety Engineering Consultant, Ricardo

I have been working in Railway Safety Engineering for 5 years, and have recently gone through a transition to work abroad in the United Kingdom.

I entered the railway industry as a Railway Engineer after my graduation, working for MTR projects in Hong Kong. During my employment with Siemens Mobility HK, I was responsible for delivering System Assurance and Electromagnetic Compatibility (EMC) services for the Shatin to Central link Communications System and Railway Control Systems. My daily tasks included reviewing design documents and drawings, producing Reliability, Availability, Maintainability and Safety (RAMS) analysis reports using simulation software and conducting Electromagnetic Compatibility tests in the laboratory. These gave me an appreciation on the vital role I was playing to assure the modified railway system was integrated safely and that the design was fit for purpose.

I have always believed that you can't put a limit on anything. Despite all the obstruction and uncertainties, I decided to head off to London to develop my portfolio in the UK railway industry. Now, I am a Safety Engineering Consultant in Ricardo Rail working in the Paddington office, London. I am glad to gain hands-on experience of safety-critical projects like Rolling Stock and Signalling and Command systems for the largest rail modernisation projects in UK such as the ETCS re-signalling for IP Western and Wales and Hitachi Rolling Stock for ScotRail and Intercity Express Programme.



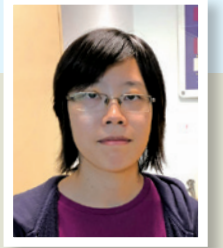
Mechanical and Automation Engineering

YIP Hiu Man

2010 BEng (MAE)
Postdoctoral Fellow, Department of Mechanical and Automation Engineering

After graduation, I worked as a research assistant in the Department of MAE. And started pursuing my postgraduate studies in the same department a year later. Over the years, I have been involved in different research projects; projects related to computer vision, technological education, robotics, etc. As an engineering researcher, I also treasure the opportunity to be involved in cross-disciplinary research with people in different fields (e.g. medicine, social science). Currently, my research mainly focuses on medical robotics, in particularly mechanical design and integration.

I am pleased to have the chance to present our work via international journals, conferences, and exhibitions. This also gives me a great opportunity to learn from experts in the field. As part of my postgraduate study, I have also been working as a teaching assistant. Being a graduate of MAE, it is my honour to have this chance to consolidate what I've learnt in my study and share my experience with students.

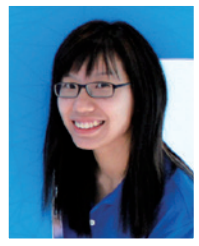


OR Pui Ying Jessica

2008 BEng (EE), 2010 MPhil (EE)
Assistant Fuel Supply Manager, CLP Power Ltd

Upon graduating I joined CLP and having gone through the HKIE Scheme A training, I rotated through various departments to familiarise myself with the company's complete operations. Currently, I am working in the fuel procurement team in CLP Power, mainly focusing on purchasing the natural gas and oil that are required for power generation.

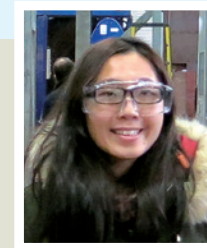
Beyond work itself, lifetime learning is important to me. I have further pursued a Bachelor of Law degree in the University of London and, more recently, went to Switzerland to attend a short course on business strategy and leadership training arranged by my company. I enjoy exploring new ideas and concepts, just as much as I did in the good old days in EE Department, when I was exposed to so many new ideas through research and experiment.



POON Hiu Ching

2009 BEng (EE), 2012 MPhil (EE)
Assistant Electronics Engineer, Electrical and Mechanical Services Department

I have pursued a fulfilling and rewarding career in Electrical and Mechanical Services Department of the Hong Kong Government. After completing my Engineering Graduate training in EMSD, I am now an Assistant Electronics Engineer. I am so glad and thankful that I can contribute my knowledge and skill to society at large. The EE Department will always be a special place for me, a place that equipped me not only with the capabilities to pursue my goal of being an engineer, but also left me with lovely memories of my classmates, professors and department staff. I treasure the valuable time spent in the EE and CUHK!



CHAN Wai Sheung Michelle

2011 BEng (MAE)
Assistant Electrical and Mechanical Engineer, Electrical and Mechanical Services Department

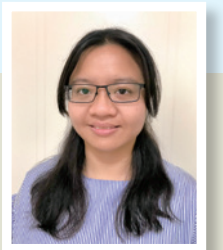
To explore possibilities early on in my career, I have worked in an engineering contracting company, and an engineering consulting firm after graduation. I am currently working for the government. It has been fascinating for me to experience different roles in Electrical and Mechanical (E&M) engineering field. From acquiring on-site technical knowledge to verifying engineering design, these experiences have enhanced my problem solving skills and engineering knowledge.

As an assistant engineer in the government, I found it both challenging and rewarding to monitor the operation and maintenance of E&M facilities in a hospital because of my duty to thousands of lives. I am grateful to MAE as well because that's where I met my husband, who was my classmate, and where I established some long-lasting friendships with classmates. It is always delightful to meet up with them socially to share our daily life and work experience.

Law Shuk Yee Zoe

2012 BEng (MAE)
Engineer, The Jardine Engineering Corporation Limited

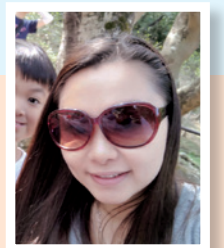
"As a woman, why do you choose a job that requires working in a construction site as opposed to a comfy office job?" This was one of the questions put to me at my job interview. My answer remains the same: "Working in JEC, I can participate in electrical and mechanical system installation and machinery and plant construction. The construction process starts from zero and then builds up step by step. Finally, the system or machine can be put into operation. Through the whole process I derive great satisfaction and genuine sense of accomplishment." You will face different challenges in design, site management, construction arrangement and project management every day when you work as an engineer in the construction industry. This may make you feel exhausted. However, I know the effort I put in will help achieve the project goal, and the final success of the project will always keep me working hard in engineering industry.



CHAN Kit Ting Kitty

2008 BEng (SEEM)
System Analyst, Hong Kong College of Technology

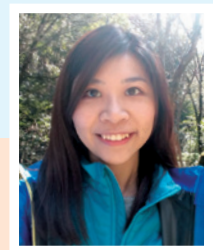
I am now working as SA in Hong Kong College of Technology, responsible for providing support and maintenance of existing systems and developing new ones. I have worked in a bank, an insurance company and in retail before, where the jobs were quite challenging but well-paid. Though I face a different set of challenges in the education field, the environment affords me a work-life balance that is very rewarding.



Systems Engineering and Engineering Management

WONG Ka Man Carmen

2010 BEng (SEEM)
Security Consultant, Trend Micro Limited



I work at Trend Micro Limited as a Security Consultant. Besides presenting our company products, I do one-on-one demonstrations for interested customers, and of course solve the particular technical challenges they face. And with different cases to handle every day, work can be challenging.

Since I graduated, I have been working in the IT industry. I have tried different positions, such as an operator in a data centre, at the help desk in a call centre and as a Network Engineer to configure network appliance at different sites. Sometimes it was shift-work, and other times I was on 7x24 stand-by. Work in the IT industry is certainly not exclusively office hours. Having moved about a bit now, I've found what suits me best — this is something that you can only find out for yourself.

NG Pui Man Emily

2012 BEng (SEEM)
Supply Chain Planner, PANDORA

I work as a supply chain planner for the jewellery brand, PANDORA. Founded in Denmark in 1982, PANDORA is one of the most famous jewellery brands in the world, selling in more than 100 countries on six continents through 7,700 points of sale. My team and I are responsible for supply chain related tasks including forecast and planning, inventory management, system maintenance and handling quality issue. For me, the most difficult task for supply chain management is to provide accurate forecasts to ensure stock availability and at the same time maintain optimal inventory level. Although it is challenging sometimes, I have a lot of fun working with my team providing customers with quality products and good service.

